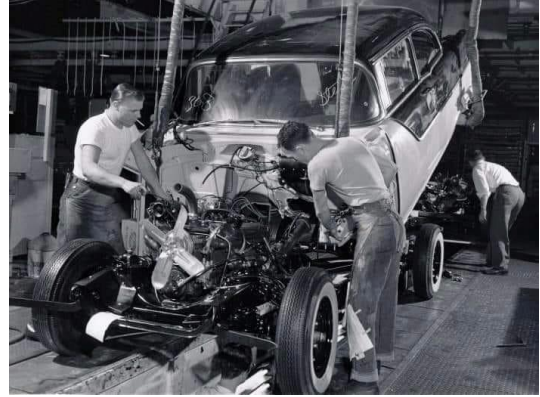


1955-57 Pontiac Fisher Body Manuals

by Larry Gorden, June 2025

If you have a 1955-57 Pontiac, you are probably familiar with the appropriate Pontiac Shop Manual. However, the Shop Manual does not include any information related to the body because Pontiac did not build the body, Fisher Body did. Fisher Body builds each body and sends it to a Pontiac Assembly plant where the painted body is mated to the frame and assembly continues. The body is just a part installed on the frame in the Pontiac assembly plant.



Fisher Body published manuals for the body, titled “**Fisher Body Service News**”. Those manuals can be thought of as the “**body manual**”. If you have a 1955-57 Pontiac, you should become familiar with the appropriate manuals.

The “body” includes the firewall, doors, floorboard, roof, trunk, all glass, seats, upholstery and body trim. The body does not include fenders, hood, heater, radio, steering column, brake/accelerator pedals, etc. For station wagons, the body includes the cargo area and tailgate.

These are the “Fisher Body Service News” publications for 1955-57:

- **1955 Pontiac #1 Body Information**
- **1955 Pontiac #2 Body Information**, Covers the Hydro-Lectric system for operating the convertible top. Also covers changes and adds information to #1 document above.
- **1955 Pontiac #3 Body Information, Station Wagons.**
- **1955 Body Information Station Wagon Sedan Delivery, Chevrolet and Pontiac,**
- **1956 Pontiac #1 Removal and installation of body parts for 4-door Catalina.**
- **1956 Pontiac #2 Body Information (except 4-door Catalina).**
- **1957 Pontiac Body Information.**

How to use the Fisher Body Manuals.

The 1955 manuals are complete with information on each model. However 1956 and 1957 manuals contain only information on components that changed from previous years. That makes them more difficult to use because you often need to reference manual of previous years. For example, you won't find how to remove/install a windshield in either the 1956 or 1957 manuals, so you need to reference the 1955 manual for the procedure.

If you have a 1955 Pontiac, open the appropriate manual and look at the Table of Contents to find the subject you are interested in.

If you have a 1956 Pontiac, first open the appropriate 1956 manual. The 1956 manuals cover only things that changed from 1955. Use the Table of Contents to find the subject you are interested in. If you can't find it, open the appropriate 1955 manual and look for the subject of interest.

If you have a 1957 Pontiac, open the 1957 manual and look at Table of Contents for the subject of interest. The 1957 manual cover only things that changed from 1956. Use the Table of Contents to find the subject you are interested in. If you can't find it, open the appropriate 1956 manual and follow the same process as above with the 1956 manual. Often that means you will be using the 1955 manual.

Master Parts Catalog.

If you are viewing a **Pontiac Master Parts Catalog** for the relevant years, you'll find a section at the end of the catalog titled "**Body Parts Section**" (see [this link](#)). That section includes parts used by Fisher Body for building and assembling the body. Since upholstery and paint are included with the body, the upholstery and paint options are covered in that section. Paint for non-body parts, including fenders and hood, was applied in the Pontiac Assembly Plant.