

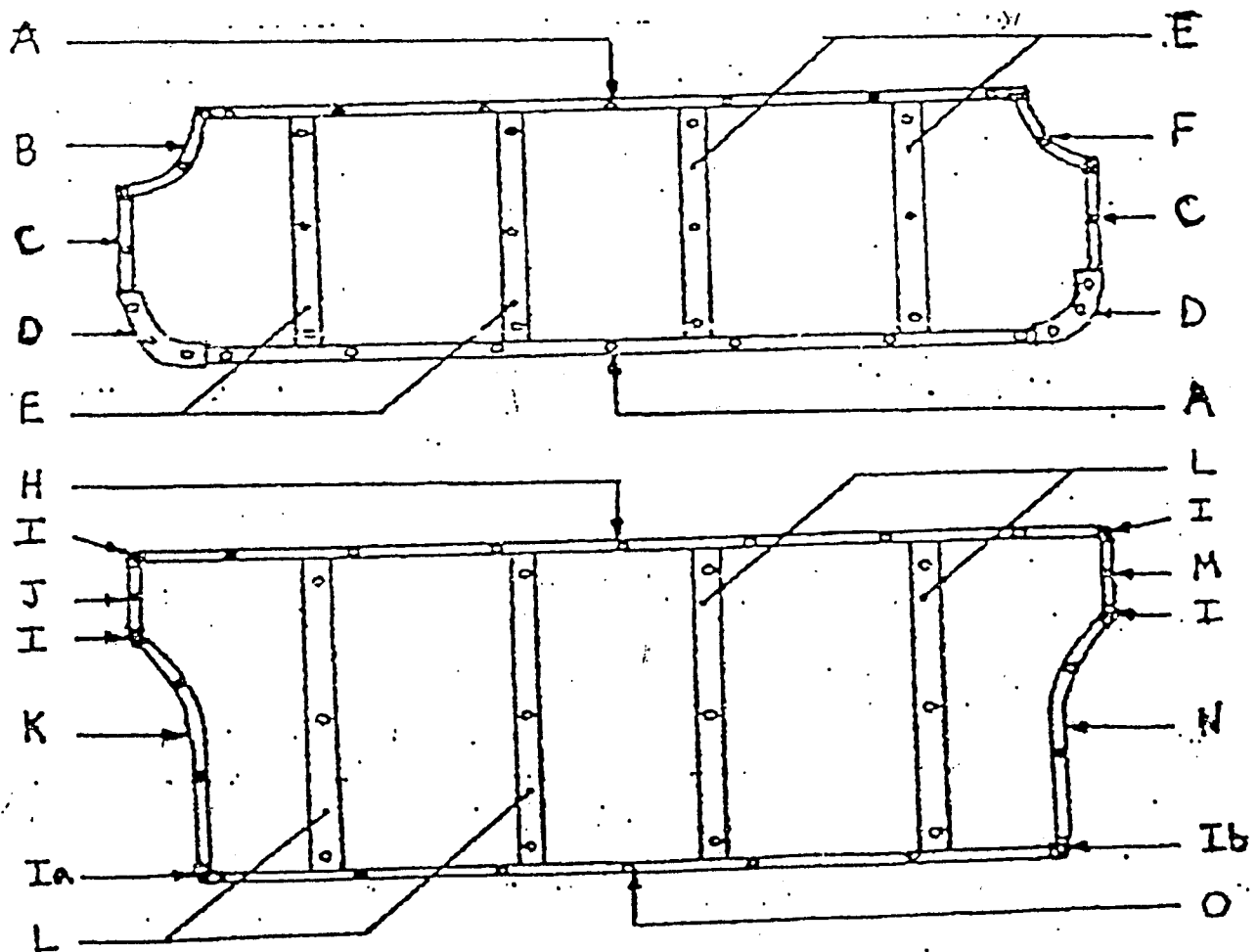
This article was originally printed earlier in another edition of Safari News, but good information bears repeating, especially for our newer members.

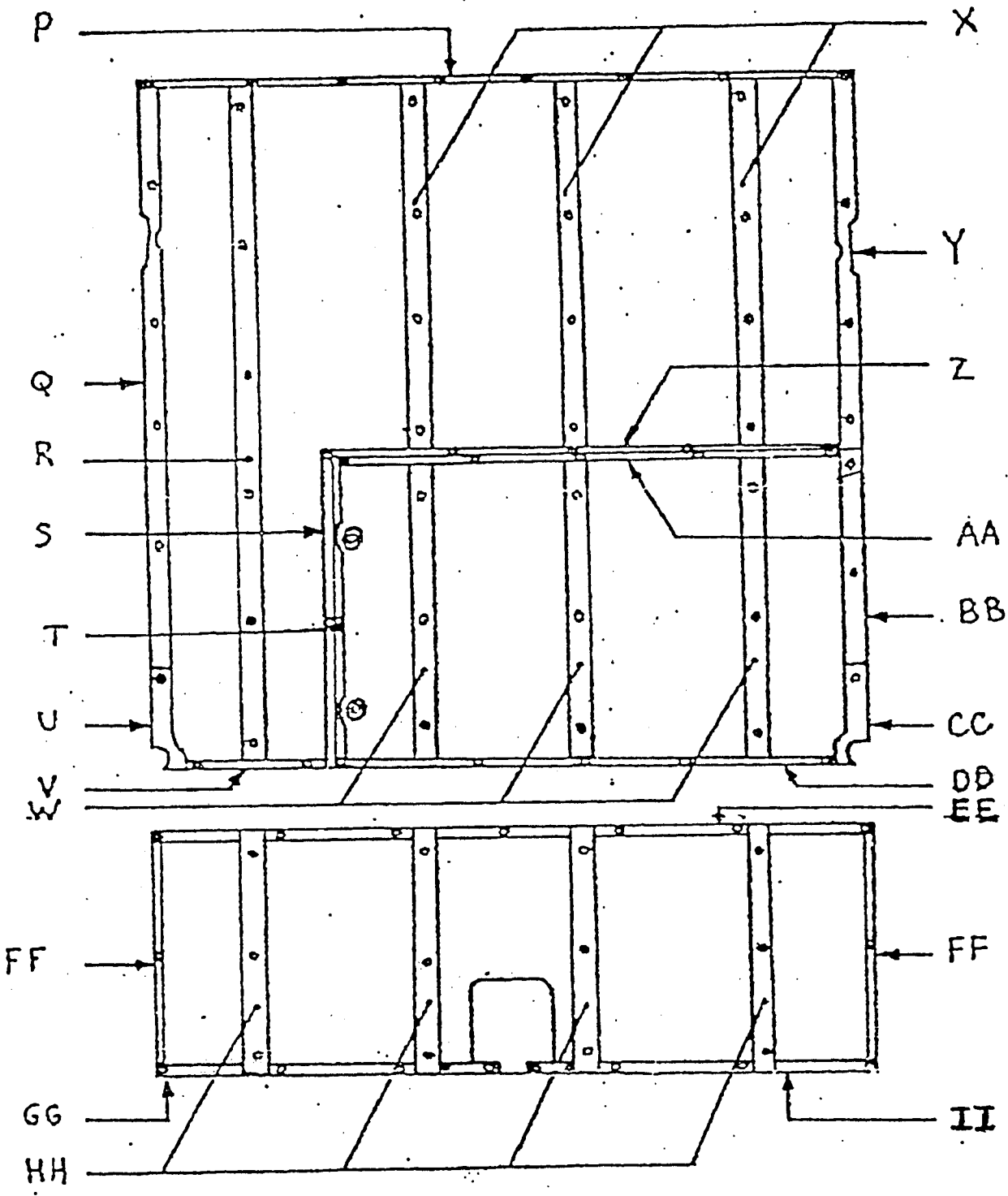
CARGO AREA TRIM FOR SAFARIS

by Michael Munger

One area of Safaris which is usually in need of repair and restoration is the rear interior cargo area. Some ex-Safari owners seem to have thought that the cars were designed for transporting cattle! Often the stainless and other trim pieces are gone or badly damaged. I hope these diagrams and charts will be useful to Safari lovers in locating and replacing the parts for their cargo areas. The information presented here was derived from a '57 2 door Custom Safari. I imagine that the other years are different in some aspects and care should be taken in transferring this information to other years and models.

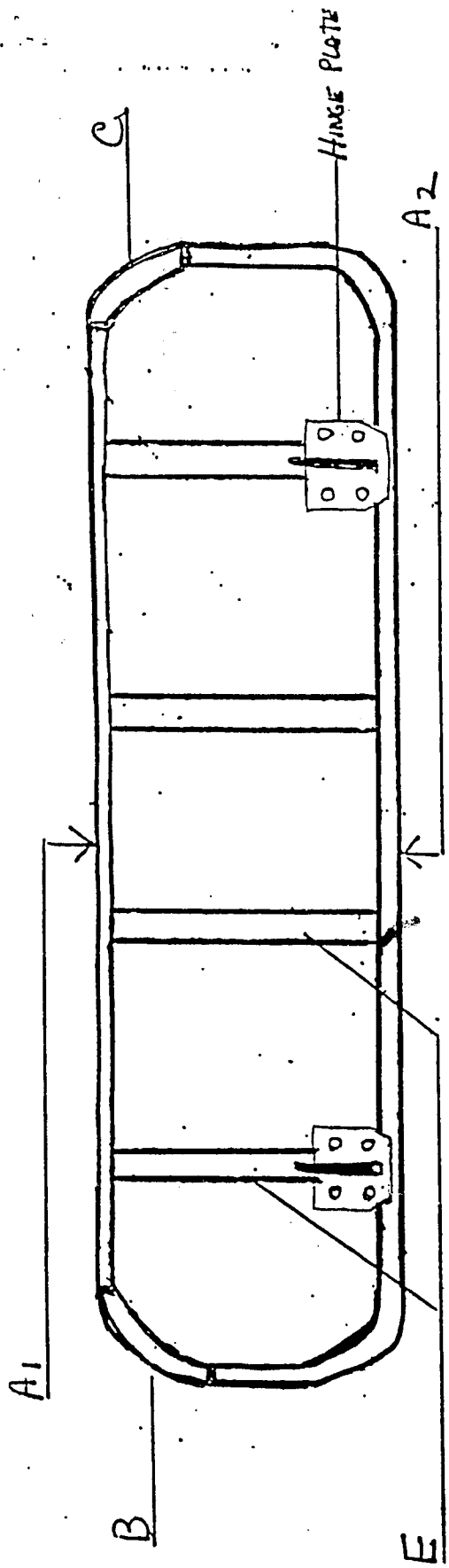
Scale: 1/10 inch = 1 inch (approximately)





LEGEND FOR '57 CUSTOM SAFARI 2 DOOR
SEAT, CARGO AND TAIL GATE INTERIOR TRIM PIECES

Special Pieces	
Code Letter	Description
D	Hinge Cover
I	Corner Pieces
Ia	Special Corner Piece
	Corner Piece



55 SAFARI

